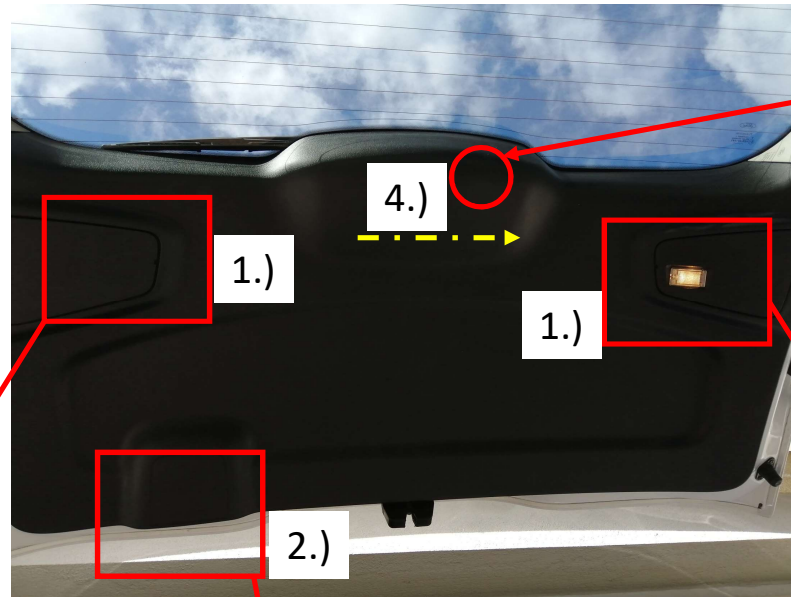
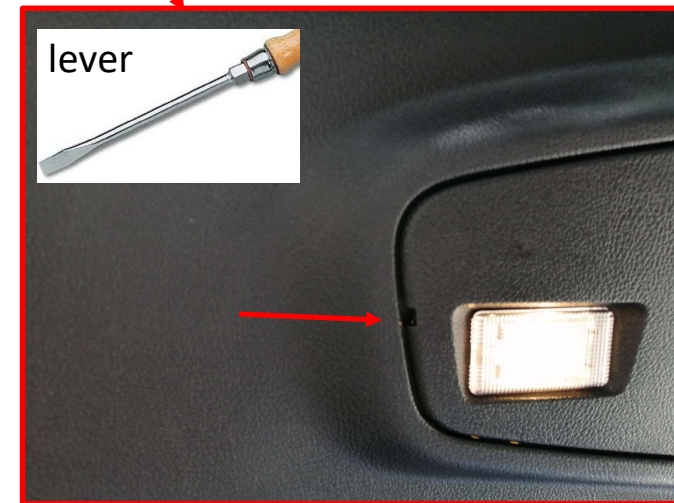
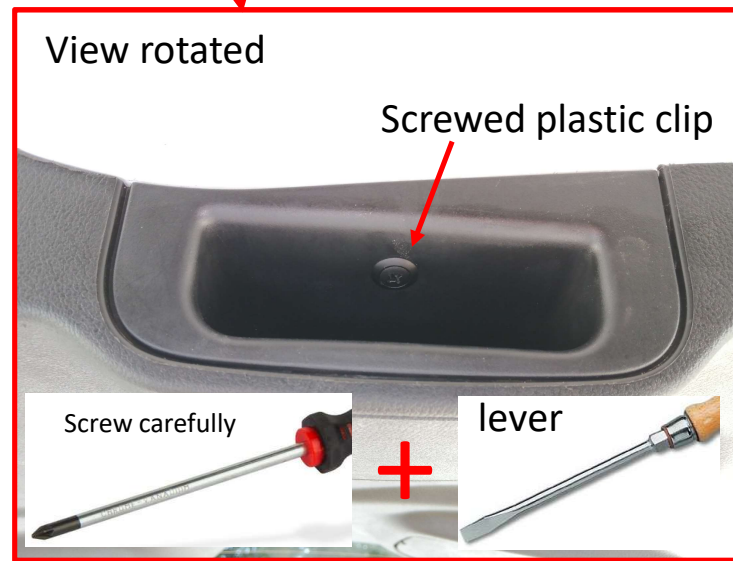
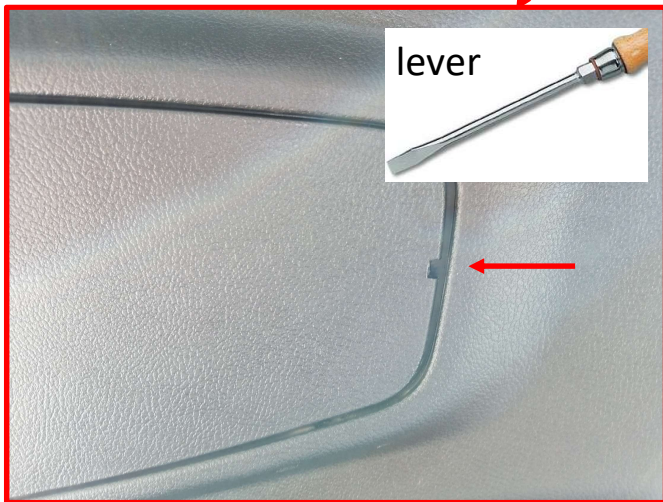
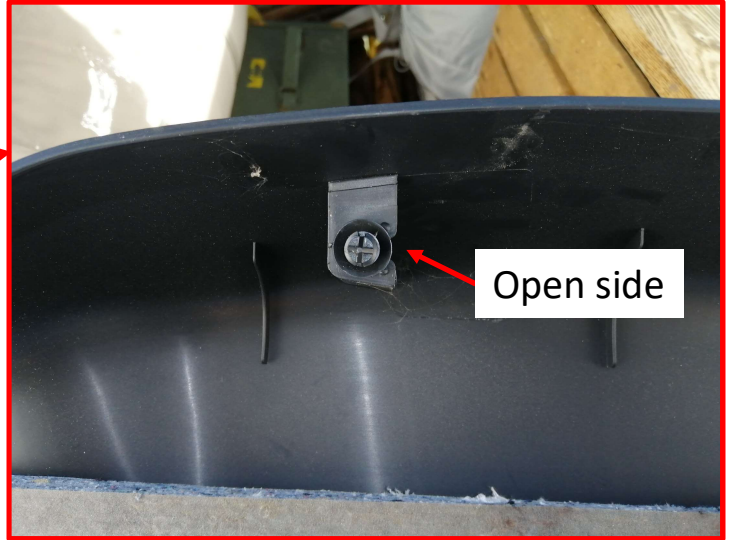
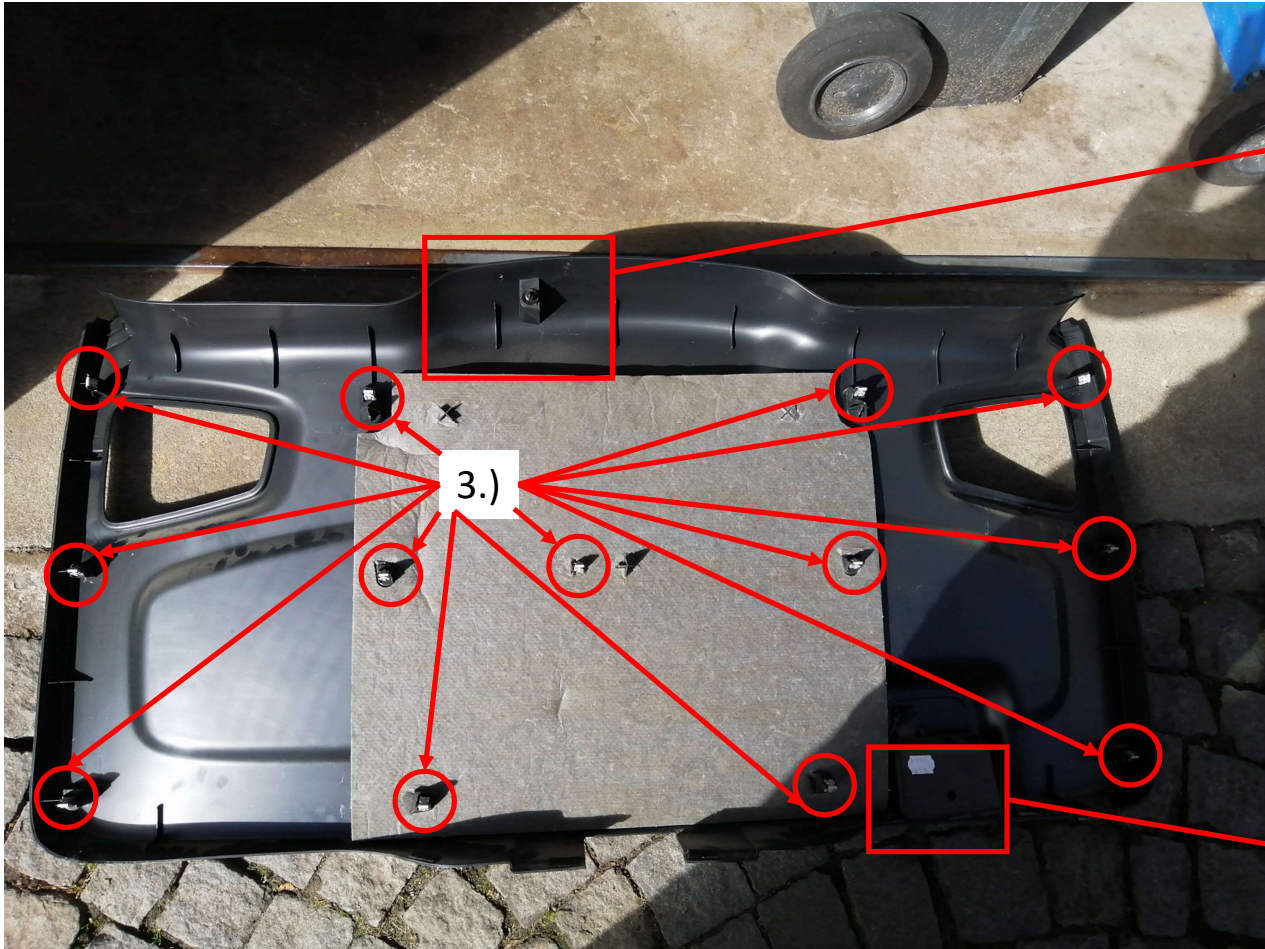


- 1.) Lever both covers (+ remove light)
- 2.) Remove screw clip
- 3.) Pull 13 clips shown on next page
- 4.) Slightly move covering to left side
- 5.) Dry wet camera plug

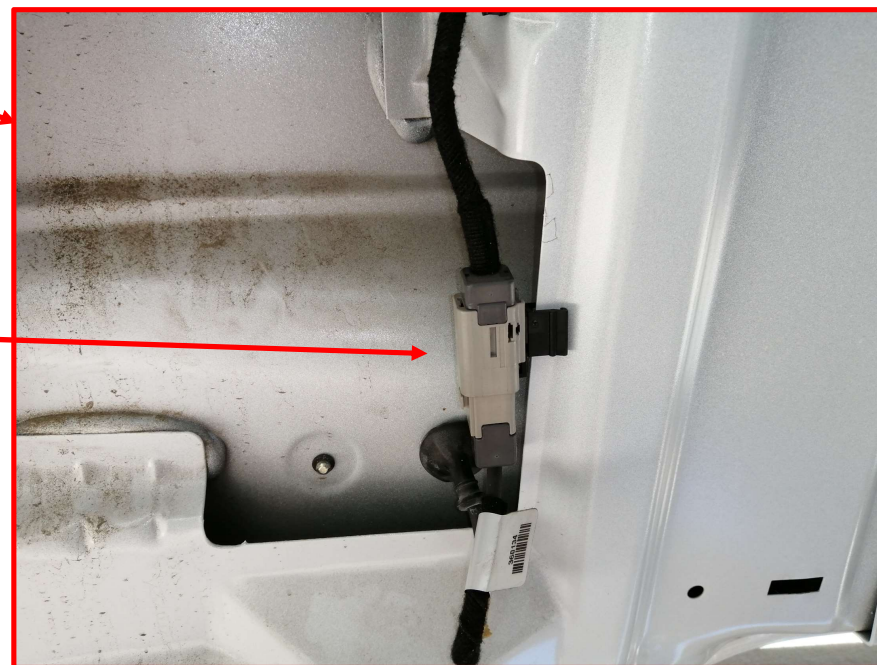
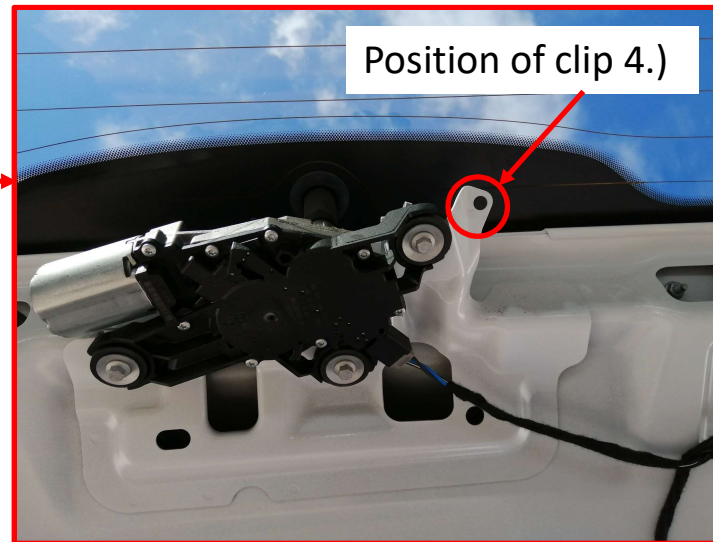
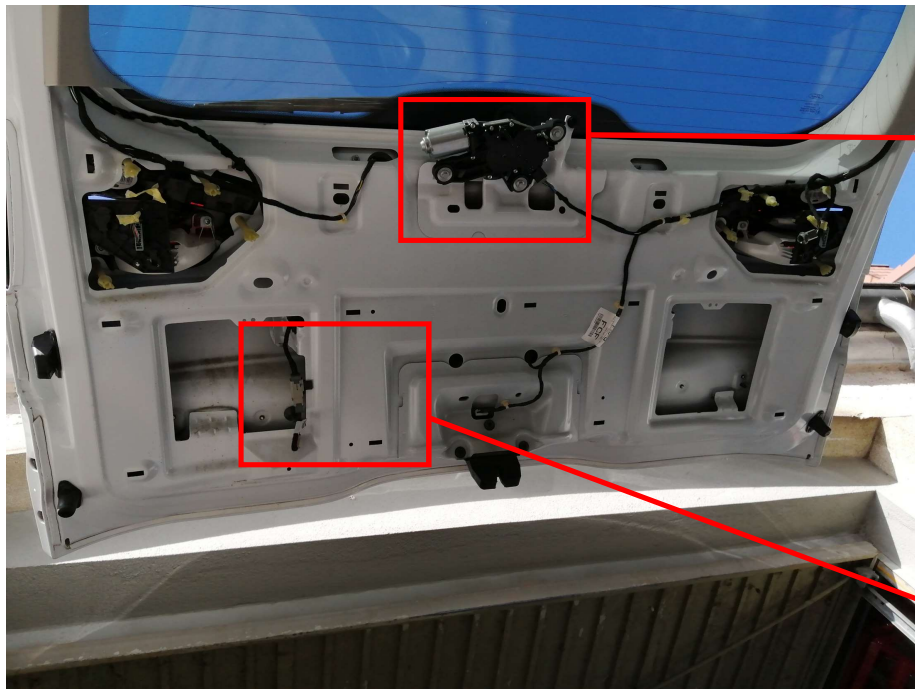


! Straight pull results in light damage !  
! See next page for view from inside !









This plug is wet and needs to be disconnected and dried  
Contact spray will help the camera working again  
... for a while